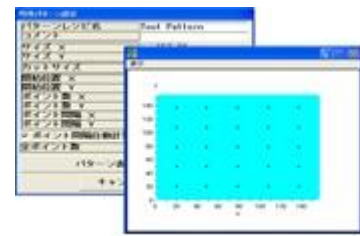
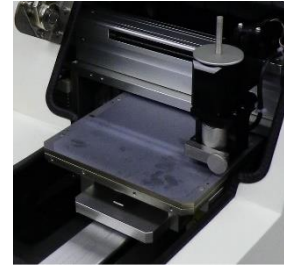


## Model : RG-200PV (210 x 210 mm version)

Semi-automatic 4 point probe sheet resistance/resistivity measurement system



High speed measurement system for Square shape sample

Multi point measurement(Programmable and Random) 2-D/3-D mapping

### Features

- Automatic Y axis stage and X-Z probing
- Multi-points measurement and Mapping display
  - 2-D map / 3-D map graphic display
  - Multipoint pattern measurement programmed and random patterns
- Windows 10 PC operation
- 7 ranges Self-test function(Tester)
- Measurement data base link with Excel via CSV format file
- Complies with the following ASTM & JIS
  - <JIS> JIS H 0602-1995
  - <ASTM> ASTM F 84-99(SEMI MF84),  
ASTM F 374-00a, ASTM F 390-11,  
ASTM F 1529-97

### Applications

- Semiconductor materials, Solar-cell materials (Silicon, Polysilicon)
- New materials, functional materials (Carbon nanotube, DLC, graphene, Ag nanowire etc.)
- Conductive thin film (Metal, ITO etc.)
- Diffused sample (Solar cell, Semiconductor)
- Others (\*Please contact us for details)

### Sample Sizes

- <Square> Up to 210 x 210 mm
- <Circle> 210 mmφ
- Thickness : Max 2 mm

A global leading company for resistivity measurement system.



## Measurement Range

Test Item	Measurement Range
V/I Ratio	1 m ~ 300 K Ω
Sheet resistance	1 m ~ 1 M Ω/□
Resistivity (Bulk)	1 m ~ 10 k Ω-cm
Resistivity (Slice)	1 m ~ 10 k Ω-cm

## Measurement Accuracy / Repeatability

Measurement Accuracy	Measurement Repeatability
<b>%BIAS &lt; ±1%</b>	<b>CV ≤ 0.7%</b>
$\%BIAS = \frac{\bar{X} - NIST\text{guaranteedvalue}}{NIST\text{guaranteedvalue}} \times 100[\%]$ <p><math>\bar{X}</math> ----- Average of same point x 10times measurement(23°C)</p>	$CV = \frac{\sigma}{\bar{X}} \times 100[\%]$ <p><math>\sigma</math> ----- Standard deviation of same point x 10times measurement(23°C) <math>\bar{X}</math> ----- Average of same point x 10times measurement(23°C)</p>

## Ideal Tact time

Points	Tact time
1	6 sec (±3sec)
5	12 sec (±3sec)
9	18 sec (±3sec)
25	42 sec (±3sec)
36	58 sec (±3sec)

\*Tact will change by setting conditions, resistance value and the sample surface state.

## Dimension / Weight / Power supply

<Dimension, Weight> W430 × D685 × H325mm, 35kg + PC

<Power supply> AC100V/120V or230V±10%, 50/60Hz, 100VA

\*Please contact us for more details.

\*The customers are always welcome to do Demo measurement.

\*Specification subject to change without notice. VER 20200526